



THE BILGE PUMP

The Official Log of the
Northwest R/C Ship Modelers

January 2010

CLUB OFFICERS

President

Allan Wing
allanwing@clearwire.net

Vice Pres

Lee Stewart
lee.stewart6@gmail.com

Sec / Treasurer

Ed Maurer,
marthaed606@verizon.net

Webmaster/

Newsletter Distribution

Gordon Canney
wb7okg@gte.net

Newsletter Editors

Darlene & Allan Wing
darlenewing@clearwire.net

Skagit R/C Meeting Contact

Keith Schermerhorn
wscherm@fidalgo.net

From the Quarterdeck



We are starting off a new year with a new leader. The first thing I would like to do is to give you an insight into my goals for the club in the upcoming year. **First** of all, I would like to get the club more visibility.

Included in this is to get the word out to the world that the Springer, which is gaining in popularity around the world, started with this club. Getting more visibility will involve trying to get notices in local news media of our events. Also as part of improving visibility, I would like to get the club web page updated. Lee Stewart has said he will tackle this project. I received several comments requesting a web page upgrade. It may not be easy but we will try. **Second** is to improve communication within the club. You all got an e-mail from me requesting a response. I did this to try and get the most up-to-date mail list so I can tell you what is going on with the club. I would hope to keep you informed as to what is going on and what I am planning. I also want this communication to be two sided. I want to hear from you. Each of you are important and it is important that your voices be heard. **Third** I hope to draw more people into club activities and helping with our events. For years it has been mostly the same core of people that make things happen. It would be nice to spread this effort around, that would make it easier and improve our experience. We have been looking at a list of tasks people can take on to help the club function. And **fourth** and last, *the most important of all*, is to have fun.

As I look forward to the new year, the first event is the Northwest Hobby Expo at the Monroe Fair Grounds on February 12 to 14. We are supposed to have a booth

(Continued on page 2)





Upcoming Events

January

- 4 Skagit R/C Ship Modelers
7:00 pm PUD, Mt. Vernon
- 7 NWRCSM Meeting
7:00 pm, Galaxy Hobby
- 10 Fun Float
12:00 CWB, Lake Union

February

- 1 Skagit R/C Ship Modelers
7:00 pm PUD, Mt. Vernon
- 4 NWRCSM Meeting
7:00 pm, Galaxy Hobby
- 7 Fun Float
12:00 CWB, Lake Union
- 12-14 Northwest Hobby Expo
Monroe Fairgrounds

March

- 1 Skagit R/C Ship Modelers
7:00 pm PUD, Mt. Vernon
- 4 NWRCSM Meeting
7:00 pm, Galaxy Hobby
- 7 Fun Float
12:00 CWB, Lake Union

(Continued from page 1)

next to the pond so we can man the booth and run boats much easier. In January's meeting I will get people signed up to watch the booth. If you cannot attend the meeting, please call or e-mail me to sign up. With a proper schedule, we can allow everyone plenty of free time to see the expo.

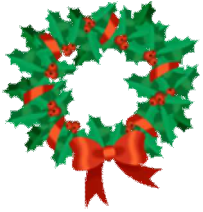
Farther out on our radar scope are the events in August. The exact plans for the Tualatin event are still a bit uncertain. The Portland Model Power Boat Association has planed their event for August 7, a week before the Crawdad Festival. Aimee Eng and the Queen's Own Scale Model Combat Warship Club have stated they will have an event on August 14 the weekend of the Crawdad Festival. We will have to wait and see how that settles out. The Foss Cup is normally the third weekend of August so it would be the 21st. There should be no conflict there.

Another event that may be nice to attend is the International Tug and Salvage Convention in Vancouver, Canada on May 17 to 21. Ron Burchett said he was planning to have a pond at the hotel where the event would be held. This could be a chance to see and be seen by some of the major players in the international tug and salvage industry. This is just a thought right now and we can discuss it in our January and February meetings.

I am looking to a fun year.

Reminder
Club Dues are payable
in
January
\$25





Northwest R/C Ship Modelers December Meeting

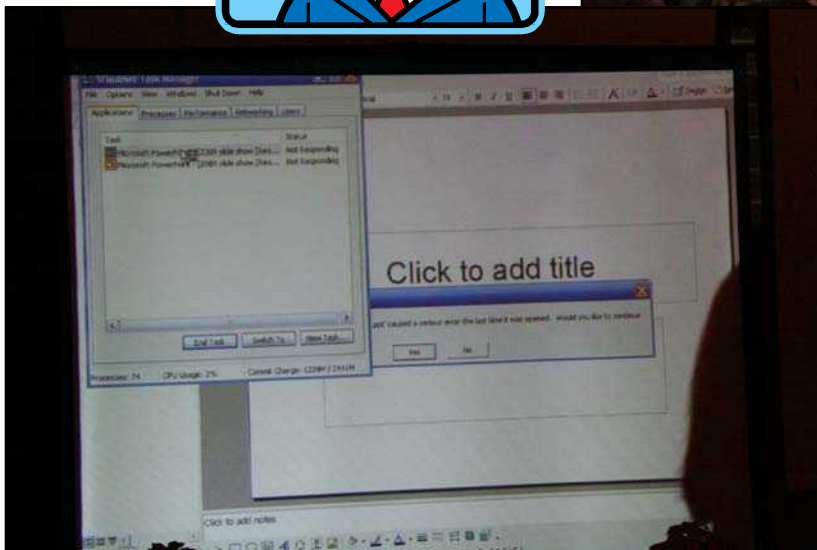
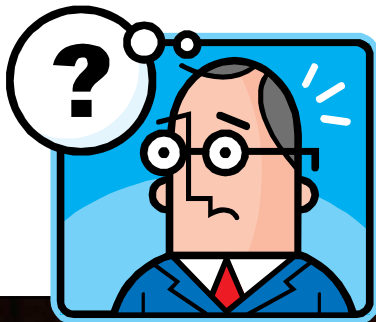
By Allan Wing

Our annual dinner meeting had no business just good food and a pleasant time for all. The evening started with wine and hors d'oeuvres. Then the catered dinner. We had a good turnout with all tables filled. After dinner, the yearly presentation was to start. There was some technical difficulties when the CD with the slideshow would not load in either computer that was available. It took several minutes and lots of help to get loading. While it was loading, Mel presented the Cliff Shaw award. The nominees were Earl Anderson, Dr Ron Bray and Allan Wing. The winner was Dr Ron. He has been sharing his innovative ways of building boats for years. He also has helped new members get started with their first boat. Our congratulations to Ron.

Mike Shaw then presented the award for the best new build. Norm Hiatt got second place for his Viking ship and Dr. Ron got first for his LA Fireboat. It seems like Ron was the big winner for the night.

With those presentations complete, Randy's presentation had finally loaded. Randy and Ben then showed the year in pictures and comments. When that was finished, we made a couple of presentations to Randy as his term as president ended. Tom Stevens had a little fun with Randy by presenting a home made award and then I presented a formal thank-you. Randy then handed over the club banner to me for the start of my presidency.

We then all called it a night and went out into the chill air.





More Dinner Pic-



Congratulations!

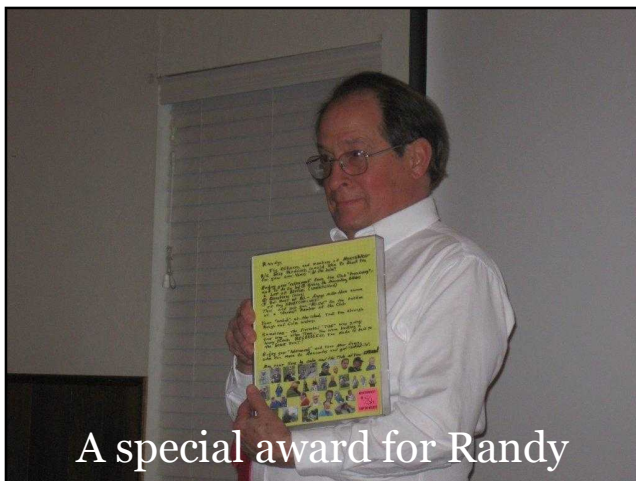
Dr. Ron wins the **Cliff Shaw Award** and **Best New Build**



Presenting the New Build Award for 2009



The year in pictures



A special award for Randy



Changing Command

Tip For the Month

By Tom Stevens

Through the years, I have seen model boat stands built from everything. They can vary from a cardboard box . roughly cut-out to cradle the hull to a detailed diorama of a boat being worked on in the ways or on a tidal grid. When I bought my 53-inch tug, the Teepee Creeper, it had a well-made stand with numerous bunks to support the keel. It looked good, displayed the model well, but the tug rolled right off of the stand, during a moderate lane change on I-5, on the way to an event. I modified the stand upon my return home.

If you are going to transport your model in a vehicle, a stand that supports the model from rolling or slipping forward or astern is a **must**. If built correctly, the one stand can be used for transporting AND display. Others may want a substantial stand for transporting and another more decorative, delicate stand for display. Whatever method you choose, here is how to build a substantial stand for transporting.

Choose a substantial piece of wood for the base. You can radius the corners and use a router to make the edges more decorative, if you wish.

There probably are numerous ways to get a good fit between the stand and the hull, but I simply use a piece of solder. Not the thin electronic solder, but the larger size. Don't worry about how much it takes, as using it to get the contour of the hull will not damage the solder. Invert the hull, being careful to remove anything that might fall-off. (Best done when you just have the hull with the bulk-heads installed) If you are building bulk-heads, it may be a good time to copy their shape, as it will be only the hull thickness difference between them and the needed shape for the stand.

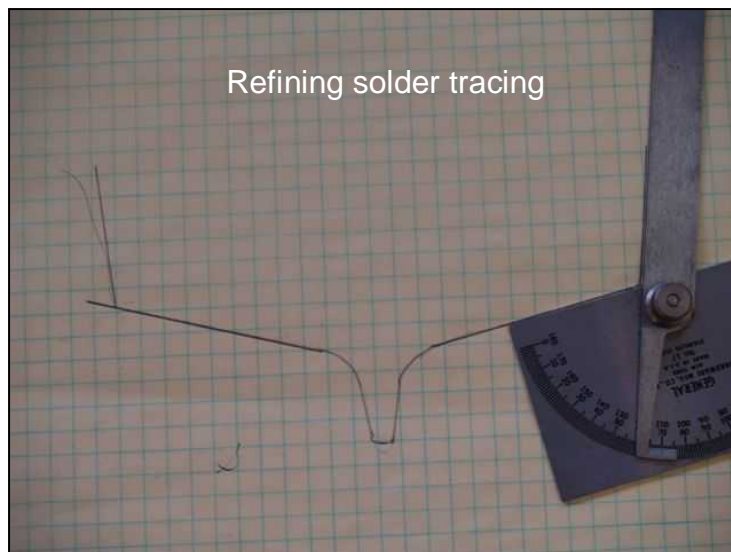
Press the solder closely to the hull. Carefully remove the solder, so you do not change the shape during removal.

Trace the inner outline to a piece of cardboard. Test for a good fit to the hull. Modify if needed. Transfer to wood when you are completely satisfied with the shape. The cradles should be forward and astern enough to prevent the hull from slipping ahead or astern, due to the most hulls tapering-in at each end of the boat. Add dowels or boards between the cradles to give additional support and enhance the appearance with perhaps, the name of the boat on the board. Use good quality glue, nail in addition, if possible.

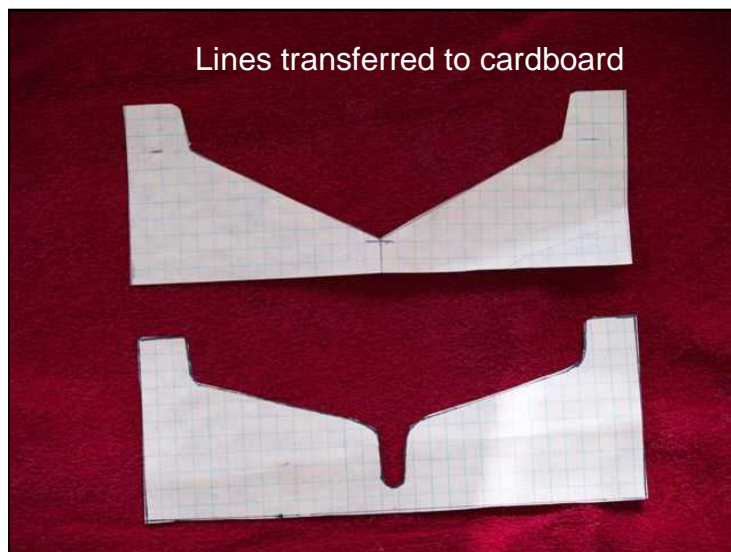


Tip For the Month continued

Trace the inner outline to a piece of cardboard. Test for a good fit to the hull. Modify if needed.



Transfer to wood when you are completely satisfied with the shape. The cradles should be forward and astern enough to prevent the hull from slipping ahead or astern, due to the most hulls tapering-in at each end of the boat.



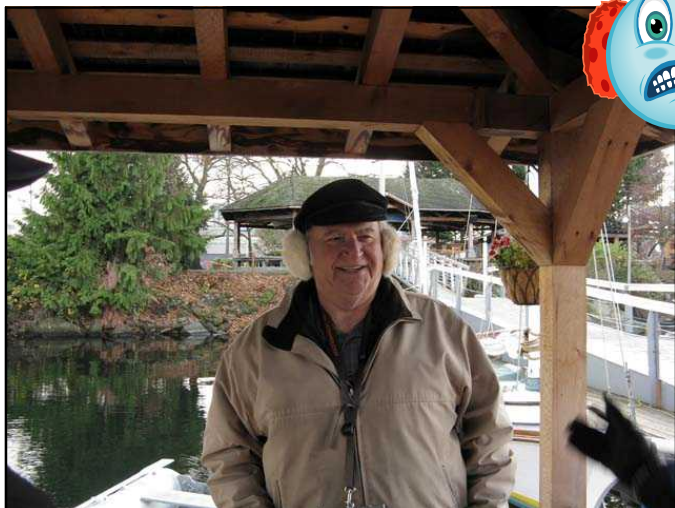
Add dowels or boards between the cradles to give additional support and enhance the appearance with perhaps, the name of the boat on the board. Use good quality glue, nail in addition, if possible.

December Fun Float

By Allan Wing



It was a cold but dry Sunday for our December Fun float. Despite the cold, we had a good group of regulars. None of the boats were affected by the cold but most of the skippers were suffering. The only mishap was Randy's boat Suzy suffering a failed drive shaft twice and having to be pushed back to the dock. We could use the rescue fixture for Springers that Al Kinsman tested last month. Earl Anderson brought one of his Red Top Springers fitted with a longer bow to test it in open water. His Red Tops are the fastest Springers on the pond and with this addition, it was even faster. We had a few more spectators that we would have expected for such a cold day. All in all it was a good float.



Mel's borrowed cold weather gear



Earl's Red Top with modified front
It is even *faster* in open water



Suzy being rescued if she does not capsize



Norm's hardy Vikings did not mind the cold