

LAYING PATTERNS FROM PLANS

Andrew Jarabak

Tom Guglielmo

To start you'll need full size construction drawings. These can be obtained from mail order, draw your own or you can scale up from construction articles or drawings. If you need to scale up any existing drawings be sensitive to any copyrights and if possible take to your local blue print shop.

The average cost for these types of enlargements run around \$6.00.

Make sure that your working drawings have center lines for all bulkhead patterns. If not then with as much accuracy as possible draw these in, as all measurements will be based on these center lines.

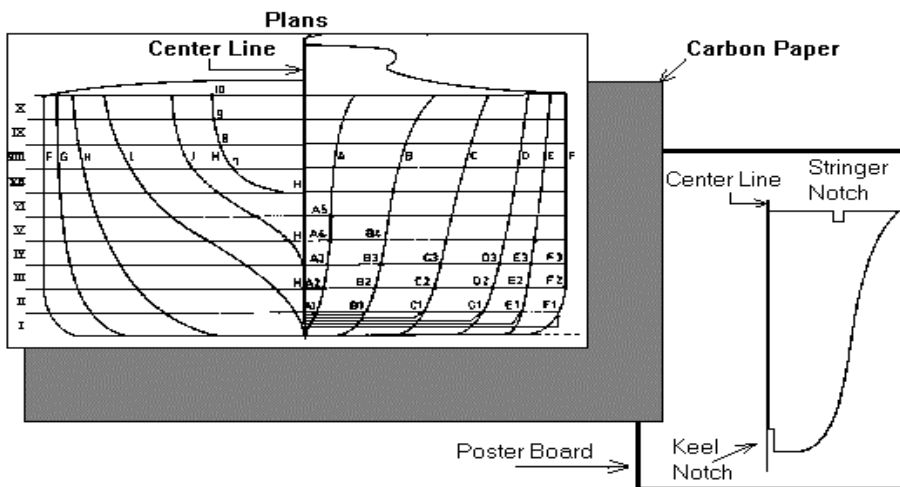
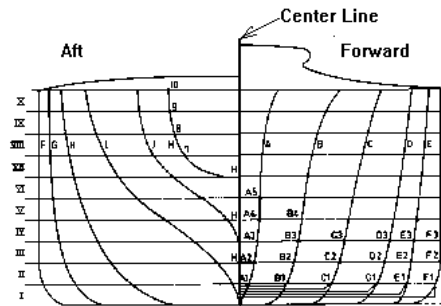
Also mark your keel and stringer notches.

Typical keel are plywood with widths

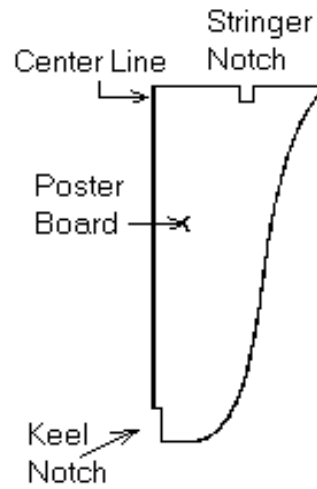
being dependent on boat size. Typical widths range from 1/4" to 1/2". It is imperative

that the plywood that you choose is straight "without" any warps!. Stringers are typically spruce or other hardwood and are typically 1/4" square.

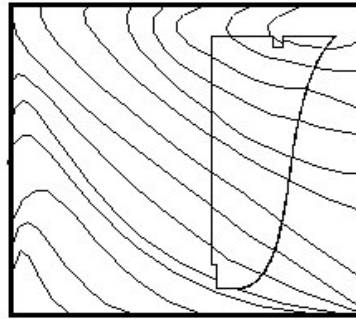
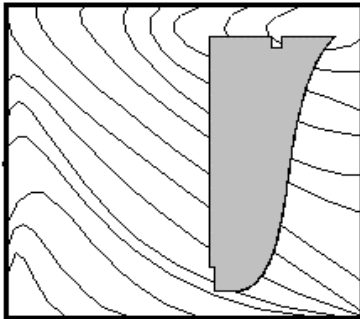
Using poster board that can be obtained from any craft store or even using cereal boxes trace "half" of your bulkhead pattern by placing tracing paper between your plans and the cardboard stock and with slight pressure outline one bulkhead at a time. Repeat until all patterns are traced.



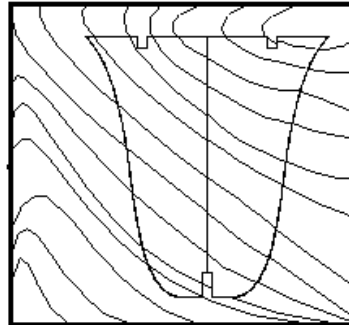
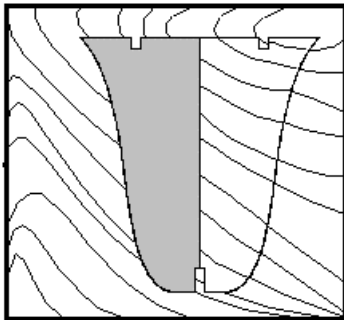
Using a sharp Xacto knife or scissors cut out each pattern. For straight edges using a metal ruler aids in cleaner cuts.



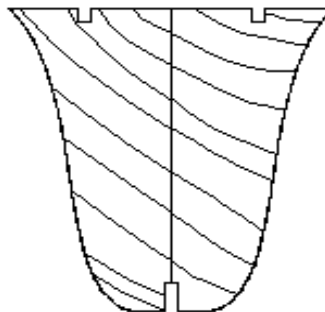
Transferring template patterns to plywood bulkheads is accomplished by placing pattern on your plywood tracing the outline with a pencil



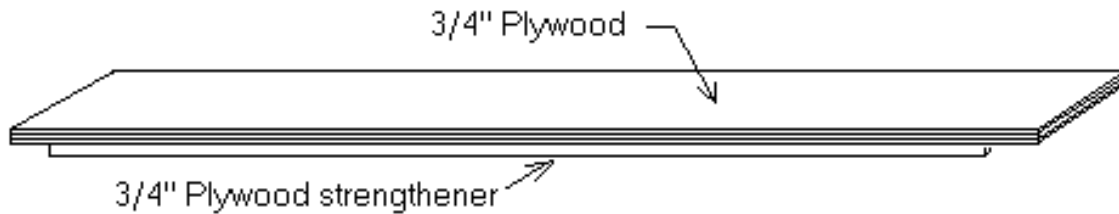
Flipping the poster template about the centerline tracing the outline again.



Last step is to cut out bulk heads.



Once all the bulkheads are cut out, you can start the frame assembly. The assembly starts with a building board on which the keel and bulkheads are attached. It is imperative that this “base” be very true (No bends or warps) and if needed be braced to prevent warping once the assembly has started. This base should be constructed from 3/4” plywood and if the model is long (>??”) in size then additional bracing may be needed as shown.



Building can be accomplished in several ways:

- 1) Keel down
 - + Bulkhead bottoms are all aligned due to building surface
 - Bulkhead stringer tops are easy to attach

- 2) Keel side up
 - + Bulkhead tops are all aligned due to building surface

Future topics: Laying the Keel and planking.

This document is intended for private use only and may not be copied and/or distributed without the written permission of the author or the president of the Northwest R/C Ship Modelers.